



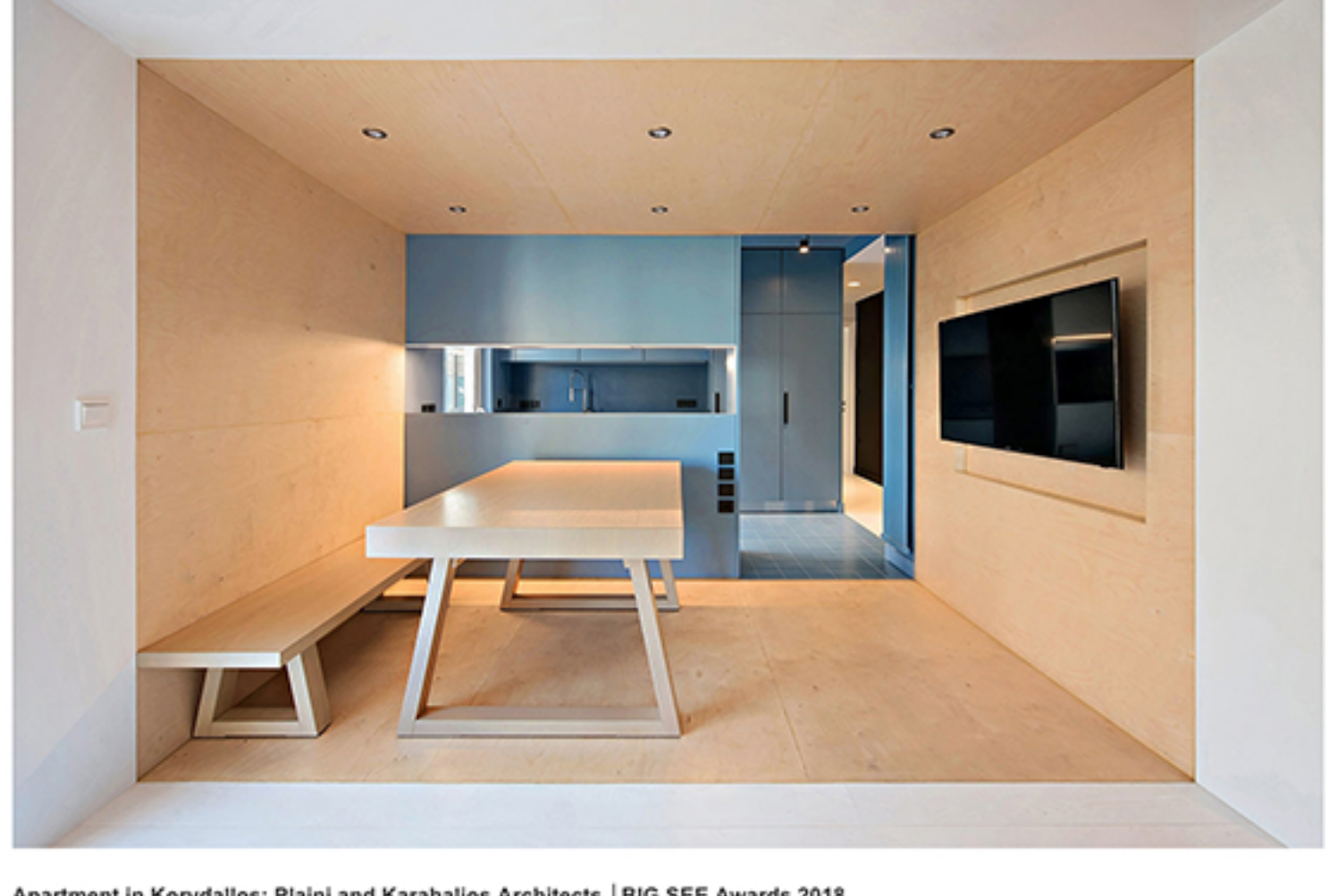
**BIGSEE**

THE CREATIVE STRENGTH,  
PASSION AND EXOTICA  
OF SOUTHEAST EUROPE

ALBANIA, AUSTRIA, BULGARIA, BOSNIA AND HERZEGOVINA,  
CYPRUS, THE CZECH REPUBLIC, GREECE, CROATIA, ITALY, HUNGARY,  
KOSOVO, REPUBLIC OF MACEDONIA, THE REPUBLIC OF MOLDOVA,  
MONTENEGRO, ROMANIA, SLOVAKIA, SLOVENIA AND SERBIA.

ARCHITECTURE | INTERIORS | DESIGN | FASHION | TOURISM | WOOD | CULTURE | **MONTH OF DESIGN >** | EVENTS | AWARDS | MAGAZINE

180° | PARTNERS | **BIG ARCHITECTURE** | **BIG SEE PAVILIONS >** | 



**Apartment in Korydallos; Plaini and Karahalios Architects | BIG SEE Awards 2018**

Danaja Jovandi | 24. 09. 2018 | BIG SEE INTERIOR DESIGN AWARD 2018, Blog, Greece, Residential

The project is the transformation of a 1960's apartment to an optimum living space for a family of four. A public family area and three private rooms had to be accommodated in 80m2.

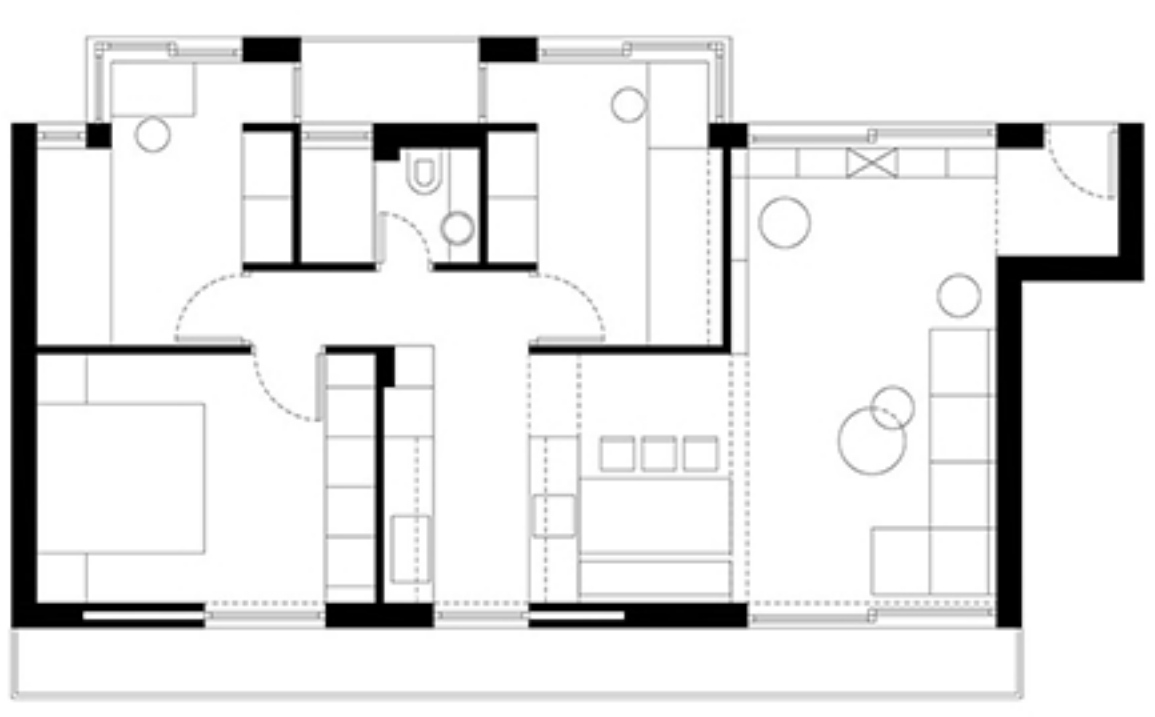
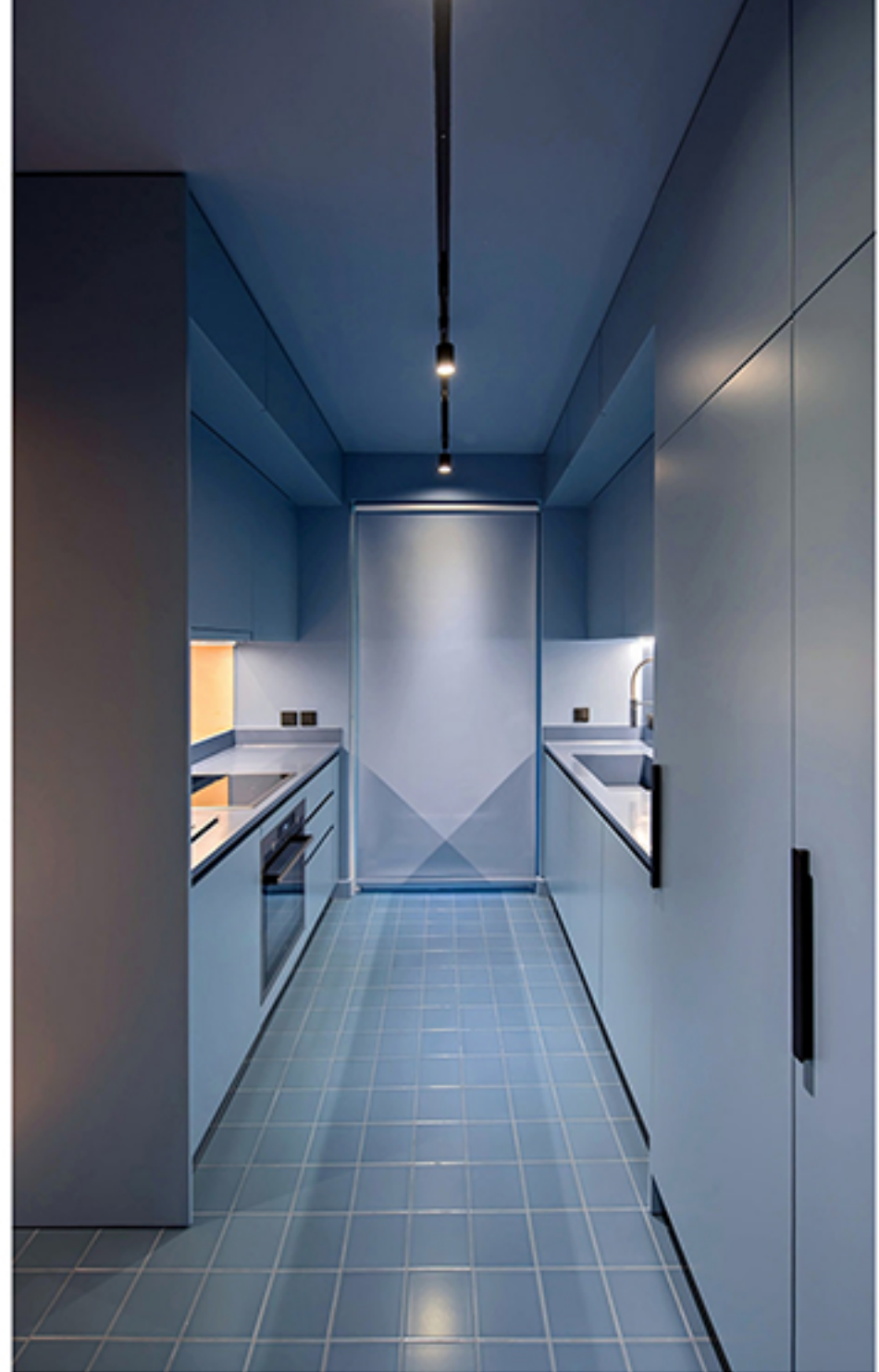
The arrangement of the apartment was reshuffled. The scheme became a sequence of spaces interlocking to each other, a travelling through subspaces. Every subspace is a threshold to the adjacent areas. The use of color and different materials on all surfaces outline the distinct boundaries.



The public area comprises of the following places: the pink entrance hall, the white living room, the birch dining area and the blue kitchen. The latter serves as a transition to the private areas. The bedrooms are organized alongside the corridor and they enclose the black box, a structure that contains the bathroom and the closets.



The heart of the apartment is the dining area. Birch wood panels cover the walls, the floor and the ceiling. By lowering the height, the threshold condition is accentuated. The area functions as a fragment of intensity and pause. From that place of gathering and co-existence, the sequential condition of the apartment becomes an everyday experience for the family.






**FILE**  
 Authors: Plaini and Karahalios Architects  
 Photos: Nikos Papageorgiou  
 Client: private  
 Year of completion: 2017  
 Location: Athens, Greece  
 Surface: 80 m2

Check out the BIG SEE event here: [Interiors 180° / Big See Awards / Month of Design 2018](#)

Powered by:



Share This Story, Choose Your Platform!    

**BIG**  
 Zavod Big, s.o.p.  
 Centre for creative economy  
 of Southeast Europe  
 Dunajska cesta 123  
 1000 Ljubljana, Slovenia  
 +386 1 4312222  
 info@zavodbig.si

Copyright 2015 Zavod Big | All rights reserved | [Privacy policy](#)   

**Click to see the full article**